

Hold dimensions

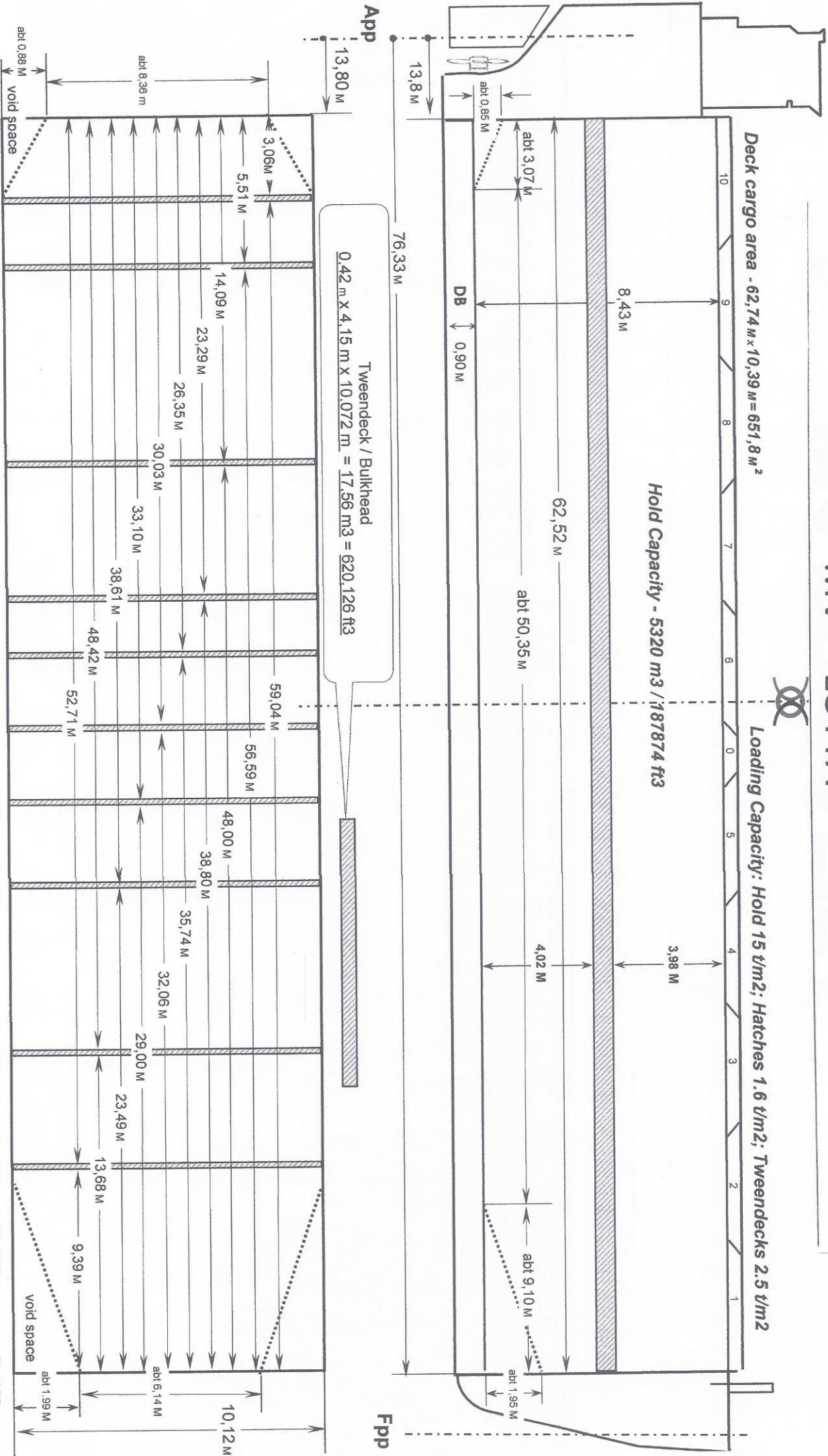
MV LOTTA



Deck cargo area - $62,74 \text{ m} \times 10,39 \text{ m} = 651,8 \text{ m}^2$

Loading Capacity: Hold 15 t/m^2 ; Hatches 1.6 t/m^2 ; Tweendecks 2.5 t/m^2

Hold Capacity - 5320 m^3 / 187874 ft^3



Tweendeck / Bulkhead
 $0,42 \text{ m} \times 4,15 \text{ m} \times 10,072 \text{ m} = 17,56 \text{ m}^3 = 620,126 \text{ ft}^3$

- Fr. 23
- Fr. 28
- Fr. 32
- Fr. 46
- Fr. 61
- Fr. 66
- Fr. 72
- Fr. 77
- Fr. 86
- Fr. 102
- Fr. 109
- Fr. 115
- Fr. 125